



# *Contents*

- 7 Introduction*
- 9 General Instructions*
- 13 Techniques*
- 18 THE PASTOR'S ATTIC (Block Patterns)*
- 79 Quilt Assembly*
- 80 Borders*
- 88 Fail-Safe Binding*
- 91 Quilt-As-You-Go Option*
- 94 Signing Your Quilt*
- 95 About the Author*



*The Pastor's Attic, 98" x 98"*  
Marsha D. Radtke, Crossville, Tennessee

## YARDAGE

**Background:** 11 yards of 36"-44" wide off-white or natural fabric

Cut the borders first. The borders are cut lengthwise along the selvage after the selvage is trimmed off. The four border widths can be cut from the first two 100-inch pieces. Two 15-inch square background blocks can be cut from every 15-inch portion of the remaining fabric.

### Appliqué fabrics:

1½ yards each of:

- dark green w/small print
- avocado green w/small print
- dark red w/small print
- dark red small floral

1 yard of marbled gold

¼ yard of marbled dark brown

**Backing:** 9 yards of 36"-44" fabric.

Since the quilt measures 98" x 98", the backing lengths of fabric may be cut and sewn together either vertically or horizontally.

## SUPPLIES

- Freezer paper
- Glue stick
- Light box
- Tracing pen or pencil
- Paper scissors
- Cloth scissors
- Fine, small scissors for thread and appliqué trimming
- Rotary cutter, mat, and rulers
- Bias bars
- Thimble
- Iron

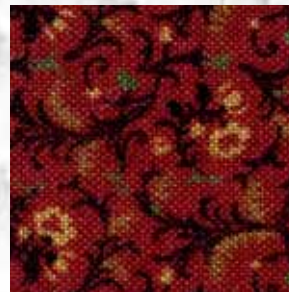
*supplies continued*



1st Green



2nd Green



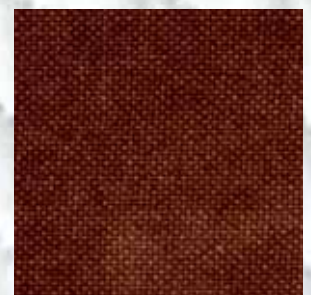
1st Red



2nd Red



Vase Gold



Underlay Brown

## General Instructions



**Batting:** thin, king-size, in a material of your choice. I recommend Hobbs Thermore® batting.

**Needles:** appliqué, embroidery, and quilting

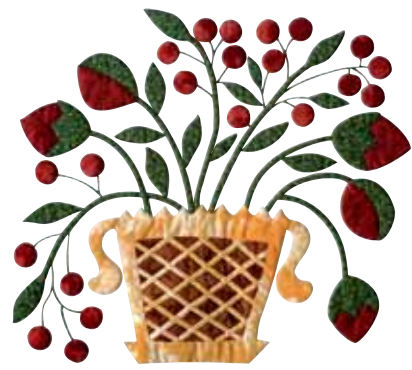
- I work best with a number 11 appliqué needle because a fine, sharp needle helps me attain a tiny blindstitch.
- To embroider, I use a number 11 or whatever is comfortable to attain the tiny chain stitch.
- For quilting, I prefer a number 11, large-eye, between needles. Sharps also work. Experiment until you find which needle suits you.



**Thread:** silk thread; embroidery floss in gold and dark green; quilting thread

- Silk thread is my preference for appliqué because of its ability to disappear into the fabric. Use a color that closely matches your appliqué fabric to get the best result.
- Embroidery floss should be separated into individual strands; then use one or two strands as indicated per block for the most authentic results.
- For hand quilting, select a good quality quilting thread that closely matches the background fabric. This will approximate the look of the original quilt, where the quilting design was as much textural as it was visual.

# Techniques



## FREEZER-PAPER APPLIQUÉ

*Note:* Paper patterns are 14" square. Fabric background squares are 15". This allows for "drawing up" of the background fabric as you appliqué. You will square up the completed block and trim it to 14½".

**1. Create a master pattern.** Trace a pattern from the book onto the dull side of a 14" square of freezer paper to create a full-size block pattern. Transfer all markings, including registration marks.

**2. Create the appliqué design patterns.** Using the master pattern, trace individual pattern pieces from the block onto another piece of freezer paper, again transferring all markings.

**3. Create the appliqué design pieces.** Cut out the individual pattern pieces and press them with a dry iron to the right side of the appliqué fabric pieces. It is important to ensure the freezer-paper pattern is securely attached to the fabric.

Cut out the pieces leaving a scant ¼" seam allowance. Fig. 1

Clip the inside curves and inside corners.

Lay a pattern piece on a flat surface wrong-side up and apply a small amount of glue along the edges. Glue down the seam allowance, smoothing and manipulating the edges with your fingernail.

For points, such as leaves, glue down the point first before preparing the sides. Fig. 2 After one side is glued, you may have to trim slightly at the tip to prevent overhang onto the second side. Fig. 3

*Note:* The stems are made using ⅜" or ¼" bias bars, depending on the pattern.

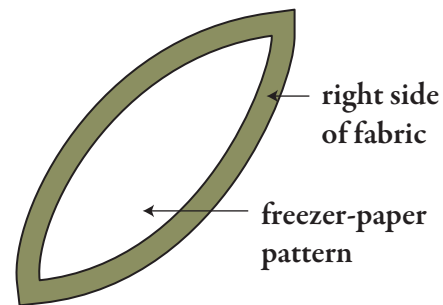


Fig. 1.

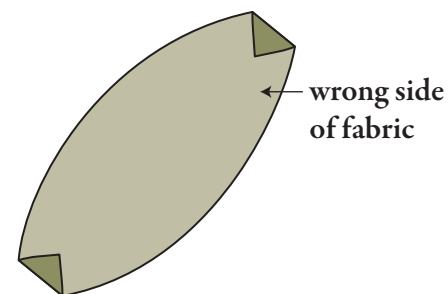


Fig. 2.

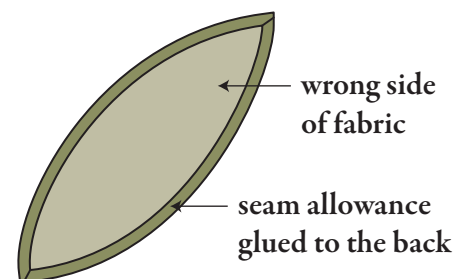
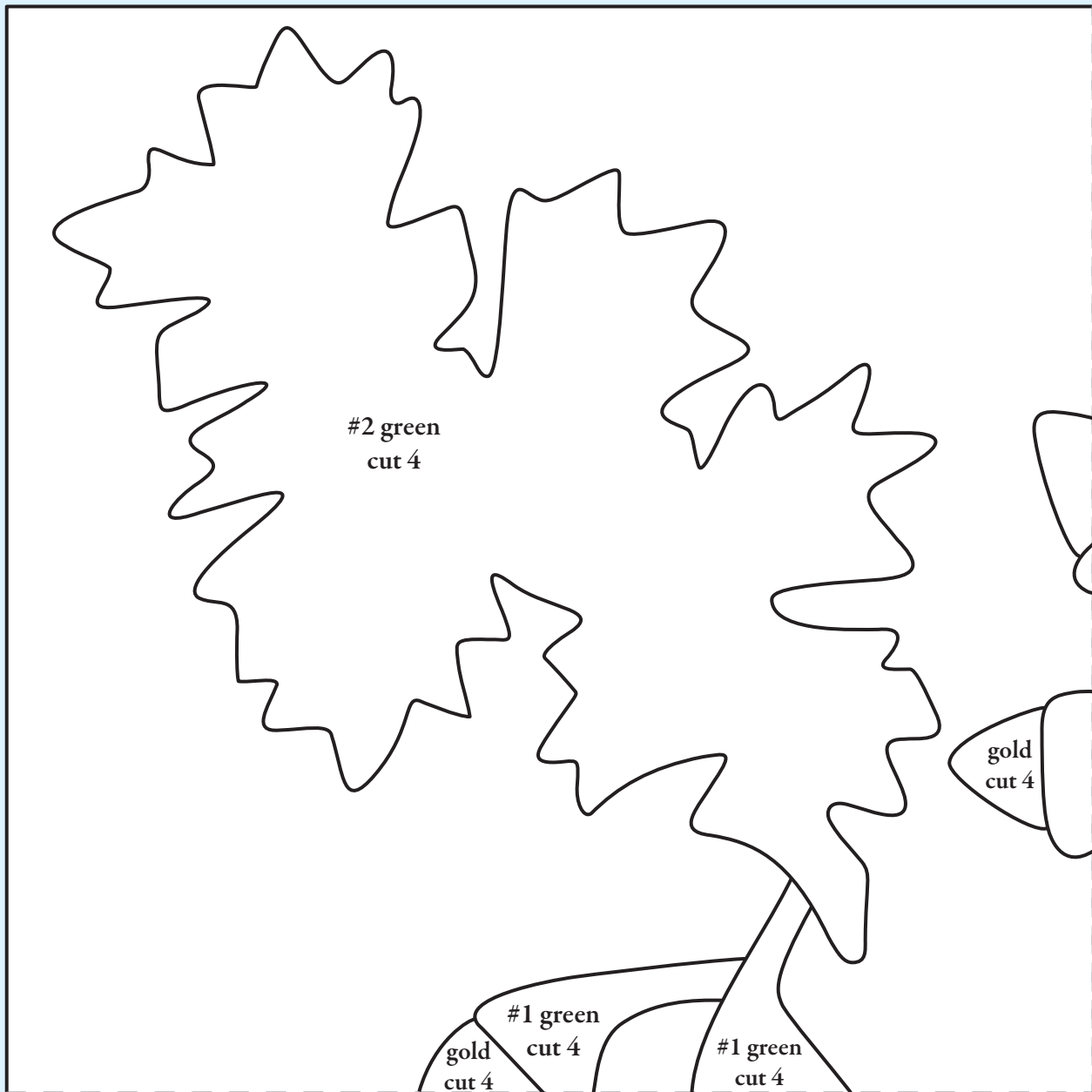
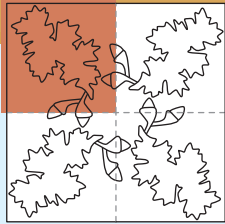


Fig. 3.

BLOCK 14

# Oak Leaf & A corn Cluster



center

BLOCK 15

*Vase of Mixed Flowers*



Use red fabric for the underlay for the reverse appliqué in pattern pieces 1A and 2A.

Dark brown fabric is used as an underlay for the vase.

underlay for vase  
dark brown  
cut 1

underlay for 1A  
#2 red  
cut 1

leaves #2 green  
stems #1 green  
all stems,  $\frac{3}{16}$ " bias bars

#2 red  
3

4

5

6

2A

center